



## Incorrect Down Force Could Cost You up to 16 Bu/A\*

Checking to make sure the planter is at the right down force setting is one of the most important things to do during planting. But checking the down force setting at one place in the field is just the starting point. The ultimate goal is to ensure down force is set correctly across the whole field, not just at one point. Seeds planted at a consistent depth help achieve uniform emergence which sets the stage for the rest of season.

## Down Force Requirements are Variable by the Foot

The amount of down force needed varies drastically across the field, and even across the planter. Different soil types and textures, moisture in soil, or just the combine tracks from last fall create different environments for each row of the planter each year. Our research shows that the weight carried on the gauge wheels while planting can vary by over 800 lbs within 3 feet. As you plant across the field, your down force needs are changing, but is your planter?

## DeltaForce Takes Control

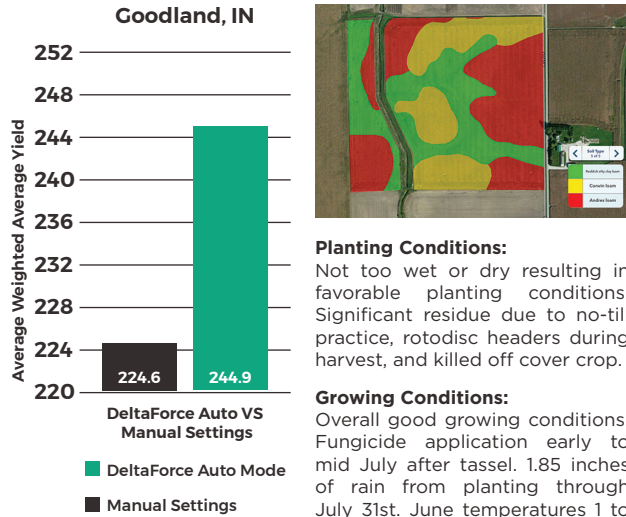
You need a planter that can sense these changing environments and adjust each row automatically. DeltaForce takes your existing planter and adds a down force sensor and hydraulic cylinder to each row. This ensures all seeds are planted at the optimal down force, ensuring consistent depth while eliminating excess compaction, row by row.



# See The Difference

How much could you be losing in yield due to incorrect down force?

## 2016 Precision Planting Down Force Studies

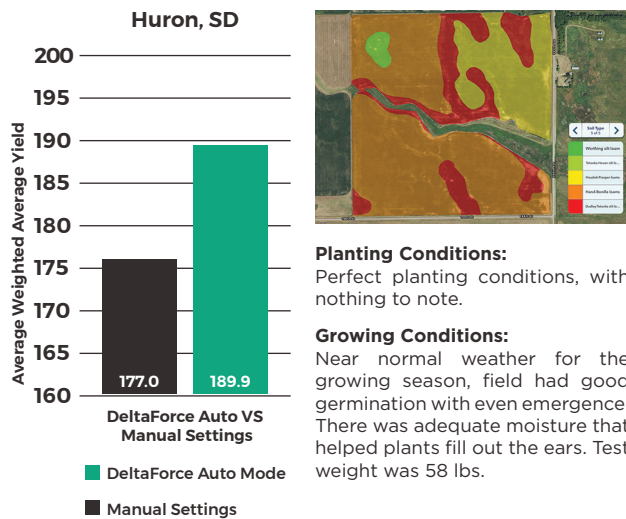


**+20.3**  
bu/A

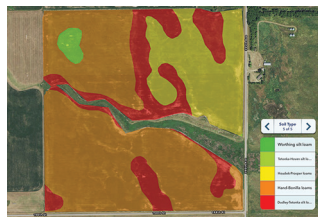


**Planting Conditions:**  
Not too wet or dry resulting in favorable planting conditions. Significant residue due to no-till practice, rotodisc headers during harvest, and killed off cover crop.

**Growing Conditions:**  
Overall good growing conditions. Fungicide application early to mid July after tassel. 1.85 inches of rain from planting through July 31st. June temperatures 1 to 2 degrees above normal, July was 1 to 2 degrees below normal while August was 2 to 4 degrees above normal.

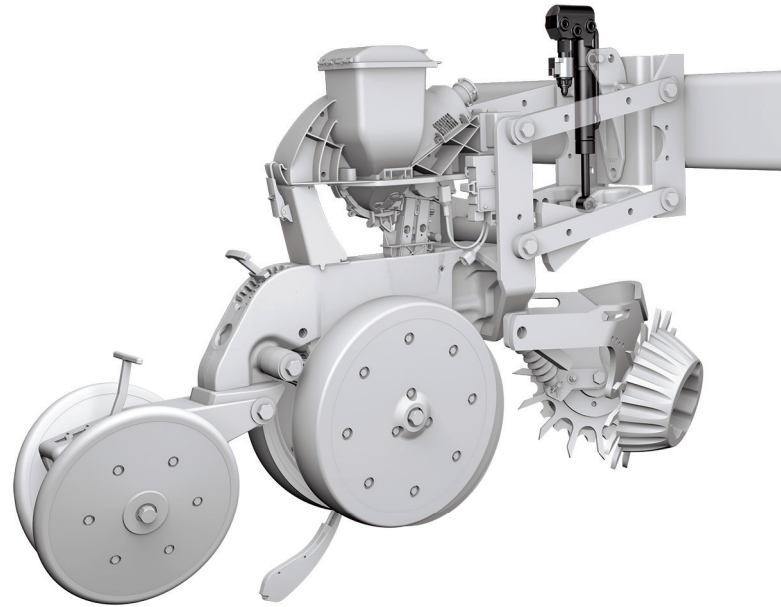


**+12.9**  
bu/A



**Planting Conditions:**  
Perfect planting conditions, with nothing to note.

**Growing Conditions:**  
Near normal weather for the growing season, field had good germination with even emergence. There was adequate moisture that helped plants fill out the ears. Test weight was 58 lbs.



## Specifications

### ROW UNIT

CASE IH® 1200/12X5/2000  
JOHN DEERE® 7000/7100/7200/7300/17XX  
DB/17X5/ExactEmerge  
HARVEST INTERNATIONAL® LaserPro  
KINZE® 2000/3000/4900  
PRECISION PLANTING® Ready Row Unit  
WHITE® 6000/8000/9000

### POWER REQUIREMENTS

1 Amp/Row  
2.25 Amp/Row with vDrive®

### HYDRAULIC REQUIREMENTS

1/4 GPM/Row Max  
Closed center system  
2250 PSI minimum supply pressure

### ALTERNATOR REQUIREMENTS

More than 16 Rows DeltaForce and vDrive or more than 32 rows of DeltaForce or vDrive requires an additional alternator

Learn more at [precisionplanting.com](http://precisionplanting.com)

Precision Planting®

\*Beck's PFR Research, third-party 2013 down force study. DeltaForce®, vDrive® and Precision Planting® are registered trademarks of Precision Planting LLC. All other trademarks are the property of their respective owners. ©2018 Precision Planting LLC.